

**WE ADD VALUE EVERYWHERE**

**value** **GROUP**  
**MIDDLE EAST** <sup>TM</sup>

**COMPANY PROFILE**

# ABOUT VALUE MIDDLE EAST

Value Middle East is a Facility Management company that has been working in Asset Management field, providing a high professional level of services and building maintenance since 2004. We are distinguished for our experience in Shopping Malls, Hypermarkets, Offices, Hotels, Residential and Commercial Buildings.

By 2011 we started a new vision by making Value Middle East a group by adding existing companies and establishing the distribution sector to distribute related products.

We manage our business with the aim to exceed our clients' standards and requirements by recruiting a strong team of a range 700 with skilful workers, Technicians, supervisors, sales team and experienced managers whom acquire a deep and cumulative experience through working in different fields, locations and Projects.

Our management system is a cornerstone that we rely on to design, execute and monitor the service procedures to ensure that the performance is always up to our clientele standards and expectations

# MISSION

## OF VALUE MIDDLE EAST

DEVELOP THE MOST SUITABLE, FUNCTIONAL AND SUSTAINABLE FM SYSTEM FOR ANY PROJECT STARTS WITH THE STRATEGY AND OBJECTIVES OF THE REQUIRED SERVICES.

# VISION

## OF VALUE MIDDLE EAST

TO EMBRACE INTERNATIONAL STANDARDS OF THE REAL-ESTATE, COMMERCIAL AND TOURISM FACILITY MANAGEMENT INDUSTRIES FOR MEETING THE NEEDS OF VARIOUS PROJECTS AND FOR ACHIEVING INTEGRATED, MODERN MAINTENANCE & OPERATIONS .  
STANDARDS TO ENSURE THE ATTAINMENT OF THE DESIRED RETURNS AND TO ADD REAL VALUE TO VARIOUS ASSETS



# SCOPE OF WORK & QUALITY CONTROL

Based on the type of building and the business model the scope of work being designed to cover the Daily, Weekly, Monthly and Quarterly cleaning duties

A special team for audit and inspection are available for regular checking and unannounced visits, to ensure that the quality of the work is up to the client standard, and according to the scope of work details.

# VALUE MIDDLE EAST CHART



**ENG. AHMED MOUSTAFA**  
CEO



**SAMIR AHMED**  
ADMINISTRATION MANAGER



**AHMED MOHAMED SHABAN**  
OPERATION MANAGER



**AHMED ELKWIDI AHMED**  
CHIEF FINANCE OFFICER



**ALI FADLON**  
MARKETING MANAGER



**ABDUL AZIZ ESAM ELDIN**  
MAINTENANCE MANAGER



**MOHAMED TAWFIK**  
HR MANAGER



# VALUE MIDDLE EAST GALLERY





**value**  
MIDDLE EAST  
WE ADD VALUE EVERYWHERE

# OUR SERVICES

HOUSEKEEPING SERVICES  
BUILDING MAINTENANCE



ELECTRICAL



PLUMING



PAINTING



CARPENTRY



GENERAL  
CONTRACTOR

HOUSEKEEPING  
SERVICES



DISTRIBUTING



LANDSCAPE  
FIELD



MOLDING  
MANUFACTURING





# CLEANING SERVICES FIELD EXPERIENCES

THROUGH OUR GROUP MEMBER " VALUE MIDDLE EAST ".

## CLIENTS :

### Carrefour Hypermarkets & Warehouses



Carrefour

Maadi City Center Branch (SQM 14,000)

Mall Of Egypt Branch (SQM 9,000)

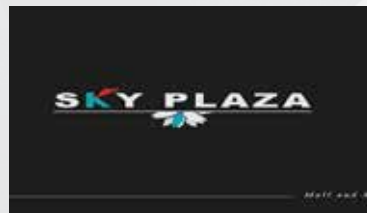
Almaza City Center Branch (SQM 8,500)



Golf City Mall Branch (SQM 8,500)

Sky Plaza Mall Branch (SQM 5,500)

City Mall Branch (SQM 5,000)



Madinaty Branch (SQM 4,000)

Cairo Festival Branch (SQM 11,000)

El Oroba Mall Branch (SQM 4,000)



WE ADD VALUE EVERYWHERE

**LuLu Mall Cairo**



**LuLu Group International**

(Head Office Cairo)



**LuLu Hypermarket Cairo.**



**MajidAl Futtaim Properties**

(Head Office)



**NewGiza**



**AMER Group.**



**Talaat Moustafa Group**



**New Giza Club**



**Porto Cairo Mall**



**Al Rehab East Market**



**Al Mosher Tantawy mosque**



**Inter-Continental City Stars**



**AI KADY MOTORS**

Al Kady Automotive City (Head Office, Showrooms, Warehouses and Service Centers).

- Ismailia City.
- 10th Of Ramadan City.
- Cairo City.

# CLEANING SERVICES FIELD EXPERIENCES

THROUGH OUR GROUP MEMBER " VALUE MIDDLE EAST ".

## SHOPS :

RAYA Restaurant's (supplies)



I Shop



Ra Sport



El Mawardy Jewelry



TIE Shop



AdidasMaadi cuty center



imberland



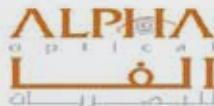
Rockport Maadicuty center



Seda Fabrics & curtains



Alpha Optical



GalleryAlkasr



Magic Planet



Concrete



United Retail Company



Mehrez & Crema



Talaat Sirgany



MobileShop



Femi9



JooJ Optics



Inglot Health/beauty



**CONSTRUCTIONS FACILITATES MAINTENANCE FIELD EXPERIENCES THROUGH OUR GROUP MEMBER "VALUE MIDDLE EAST".**

## VILLAS

FIFTH SETTLEMENT-NEWCARO-ALSHROUK-ALABOUR-  
HADAEKALAHRAM-6OF OCROBER

## VILLAS

PRIVATE CHALETS NORTH COAST &AIN SOKHNA  
TURQUOISE TOURISM -IA LONA BEACH SOKHNA - HOLIDAY BEACH

### CLIENTS :



DEUTSCHE EVANG. OBERSCHULE KAIRO  
(Dokki Branch)



Maadi City Centre



### PARTNERS :



# HOUSEKEEPING SERVICE FIELD EXPERIENCES THROUGH OUR GROUP MEMBER "VALUE MIDDLE EAST".

## PARTNERS :



**DISTRIBUTING FIELD EXPERIENCES  
THROUGH OUR GROUP MEMBER  
"VALUE MIDDLE EAST".**

**PARTNERS :**



Falcon Chemicals



## LANDSCAPE FIELD

EXPERIENCE THROUGH OUR GROUP  
MEMBER - GREEN LIFE



PEPSICO, AFRICAN EXPORT-IMPORT BANK HEAD OFFICE, SODIC HUMAN DEVELOPMENTS, ALLIANZ - EGYPT INSURANCE, GENERAL AUTHORITY FOR INVESTMENT AND FREE ZON, LOGOS PACK FOR PACKAGING, SONS OF EGYPT URBANIZATION (HASSAN AU-AM), CONTRACTING—MGSZ', THE MINISTRY OF CULTURE -NATIONAL THEATRE, CORTIGIANO RESTAURANTS, DAR JODODNA RESTAURANTS - DOKKI, SANTO RESTAURANTS - REHAB - HELIOPOLIS, WASEALY FACTORY FOR SWEETS AND BAKED GOODS / INDUSTRIAL AREA/ ABOURCITY, HIGHER INSTITUTE OF SCIENCE AND TECHNOLOGY, ENGINEERING TENTH OF RAMADAN, CAD-CAM COMPANY SOUD WORKS, HELIOPOLIS SPORTING CLUB., EMAAR COMPOUND), ARDIC REAL ESTATE DEVELOPMENT (RESIDENTIAL COMPOUNDS) - NEW CAIRO.

## MOLDING MANUFACTURING FIELD EXPERIENCE THROUGH OUR GROUP MEMBER "SHAKY'.

**THE FACTORY IS EQUIPPED WITH THE FOLLOWING MACHINES AND SPECS :**

• **DIFFERENT SIZES OF INJECTION MOLDING MACHINES WITH DIFFERENT CAPABILITIES AND LATEST CONTROL TECHNOLOGY AS :**

LATEST CONTROL SYSTEMS (KEBA-AUSTRIA), EXTRA OUTPUTS FOR ADVANCED MOLDS, HIGH PRODUCTION SPEED

• **DIFFERENT SIZES OF BLOWING MACHINES WITH DIFFERENT BLOWING CAPACITIES AND CAPABILITIES AND LATEST TECHNOLOGY AS :**

PARISON CONTROL IOOPTS (MOOG- JAPAN), STRONGER CLAMPING UNITS, ANGLE BLOW-PIN SETS, AUTO DEFLASING, VIEWSTRIP.

• **MORE THAN 12 AUXILIARY MACHINES**

LEAKTESTER, TEMPO PRINTING, AUTOMATIC ASSEMBLY EQUIPMENT, AUTO-LOADERS, DEHUMIDIFIERS, HOT RUNNER CONTROLLERS, CHILLERS, COOLING TOWER, COMPRESSORS, CRUSHERS.

• **MOLD WORKSHOP MACHINERY AND TOOLS WITH EXPERIENCE OVER THAN 33 YEARS IN THE FOLLOWING SECTION**

MOLD DESIGN AND MANUFACTURING, PROTOTYPES AND 3D PRINTING, LATHE MILLING (TRADITIONAL AND CNO), EDM, EDM WIRECUT, WELDING, MECHANICAL INSTRUMENTS DESIGN AND MANUFACTURING.

**OUR CLIENTS ;**

WE PROUDLY SHARED SUCCESS WITH SOME OF THE LOCAL AND MEGA MULTINATIONAL COMPANIES.

**THE MULTINATIONAL COMPANIES UNILEVER**

(14" ROLL ON BALLS FOR REXONA ROLL-ON DEODORANT), EGYPT (SHAVING CREAM TUBE CAP), AVON (1.0' ROLL ON BALL), BASF EGYPT AND JERICANS, FUCHS CANS, KLINMAK ITALY (10 MOLDS AND PLASTIC END PRODUCTS). THE LOCAL COMPANIES ; DR CHABRAWICHI (ILT HAIR CARE 1, LT MINO), PYRAMIDS FOR COSMETICS (100ML 82502GO AND MORE), PYRAMIDS FOR DETERGENTS (LEO POLISH, AIRCODE FRESHNER HIJIDETERGENTS), MISR FOR DETERGENTS (ILT SPARY, CAPS, CONTAINERS, &MOLDS), MISR INTERNATIONAL (KHARMA GROUP) (ROLLON, CAPS), MY WAY (BOTTLES, CAPS, JERICANS, CONTAINERS, ROLL-ON, &MOLD9, MASH (LT LIZA, 2LT SHOWER LIA, 80ML SUN BLOCK CAPS, OTHER), ADCO PHARMACEUTICAL (CAPS), HANCE (CAPS), IMTENAN (OIL CONTAINER & MOLDS), MARCYRL PHARMACEUTICAL (CAPSULES CONTAINER AND CAP MOLDS), ADCO PHARMACEUTICAL (CAPS), NOBLE WAX (750ML KITCHEN CLEAR 500ML TOILET CLEANER &MOLDS), PURE MISR (15LT SHOWER JERICAN, 750ML KITCHEN CLEANER TOILET, CLEANER 50ML ROLL-ON), DOLPHIN (KG CONTAINER ILT BOITLES, 15LT, 2LT, JERICANS, & MOLD).

# Machinery and equipment



## RiDo8065 HiLo8065

With the introduction of this innovative scrubber-dryer, we have maintained the mobility and manoeuvring characteristics of a walk-behind, with the productivity and yield of a ride-on.  
**The combination of advantages generates a unique machine that allows it to adapt to all types of applications.**



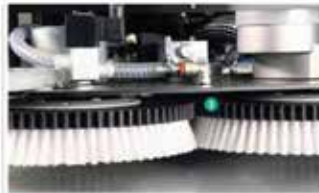
### 1 Front washing head

- Grassy enhances visibility during work
- Ensures full coverage of the areas in which it works, compared to the versions with bowl, single or double brush, "toily band"
- Perfectly cleans corners and edges. Flush and in tight spaces, avoiding costly manual pick-ups.



### 2 Wiper in front of the wheels

- Drying in front of the wheels allows, especially in maintenance washing, to constantly drive on a dry surface, preventing slippage or accidental blows on curbing or braking.
- This innovation greatly increases comfort and the safety standards.



### 3 Cogbrush (planet pivoting)

- The use of a double brush ensures a uniform and excellent cleaning on various kinds of surfaces and greatly increases the quality of result compared to a single brush.
- Cogbrushes allow the use of a single gear motor, simplifying the transmission and reducing the cost.
- Moreover, there is an increase in energy efficiency, benefiting the autonomy of the scrubber-dryer.



## Technical Specifications

Tanks (clean / dirty water)

80/80 L

Cleaning path

650 mm

Brushes

2 x Ø13" - 330 mm

Speed

0 - 6 km/h

Productivity

3.900 mq/h

Power / Voltage / Protection

1.350 W / 24 V / IPX3

Load on brush head (adjustable for HiLo8065)

0-41 kg

Runtime





# Machinery and equipment

**value**<sup>TM</sup>  
MIDDLE EAST  
WE ADD VALUE EVERYWHERE



# Machinery and equipment



RS 20  
Inox trolley



Frangia completa Micro-Dust



Asta telescopica



Scopa a forbice completa



Cintura per Tubex



Scraper cm 10  
With 10 blades



Security scraper



LIGHT - Loopfix wet-mop  
WLD



Dusty dust-mop  
With Loopfix lock



Window squeegee ha...  
In stainless steel



Plastic mop-wringer



Monoroll mop-wringer



Scraper raschietto con impugnatura



Support for mop  
Stainless steel AISI 304



Tubex  
Tools-holder



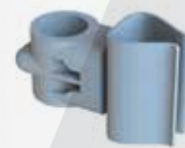
Floor squeegee  
In metal with black rubber



Telalo Alu-Wing



Scopa per stradini



Handle holder for tube



Kentucky Mop



Wet floor warning



Frangia Dobby



Plastic mop holder



Replacement sleeve  
With abrasive strip



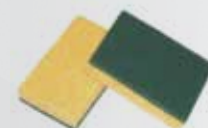
Microtiger sleeve



SPONGE CLOTH  
Cellulose sponge cloth in assorted colors. Colour code identifies the different use application.












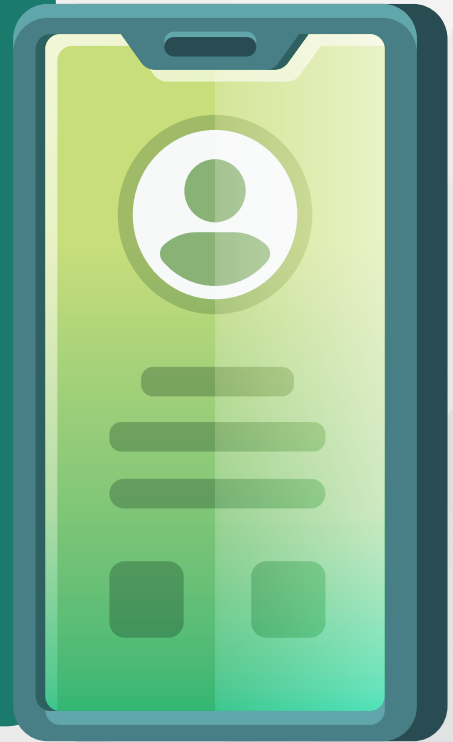
Micropanno PLUS



CELLULOSE SPONGE WITH  
ABRASIVE FIBRE

## Contact Us

-  +2 022 474 959
-  +2 011 1731 1088
-  [info@valuemiddleeast.com](mailto:info@valuemiddleeast.com)
-  [www.valuemiddleeast.com](http://www.valuemiddleeast.com)
-    @ValueMiddleEast
-  [value-middle-east](https://www.linkedin.com/company/value-middle-east)
-  2046 Maadi, Ring Road,  
Cairo, Egypt



# value™

MIDDLE EAST

WE ADD VALUE EVERYWHERE

value™

MIDDLE EAST

THANK YOU

WE ADD VALUE EVERYWHERE